

## ADDITIONAL INFORMATION FOR PC CONNECTION

### MAJOR FEATURES

#### JLIP Video Capture Software

For further operating procedures, refer to pages 5–39 in the software's instruction manual.

#### Video Capture Facility

Video images from a camcorder can be captured as 640 x 480 still images with 16.77 million colours through the serial port (RS-232C) of a Windows®-operated computer.

#### JLIP Control Facility

- With a JLIP compatible camcorder:
- all basic video operations can be executed via the computer display;
  - Up to 99 images can be captured automatically with Program Video Capture (playing tape — scanning — transferring to PC).

#### Data Sharing With JLIP Video Producer Software

Data can be imported from the JLIP Video Producer Software. Data from the Video Capture Software can also be exported to the Video Producer Software for Program Playback or Assemble Editing.

#### JLIP Video Producer Software

For further operating procedures, refer to pages 41–68 in the software's instruction manual.

#### JLIP Control Facility

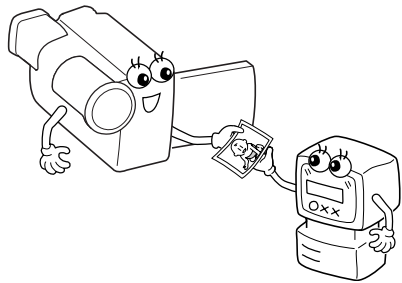
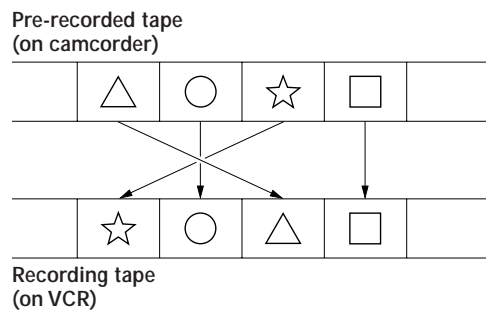
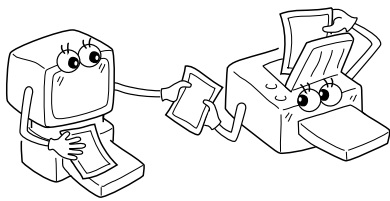
- With a JLIP-compatible camcorder:
- all basic video operations can be executed on the computer display;
  - allows programmed video playback (up to 99 programs) or assemble editing.

#### Data Sharing with the Video Capture Software

Video Capture Software data can be exported to the Video Producer Software.

#### Assemble Editing

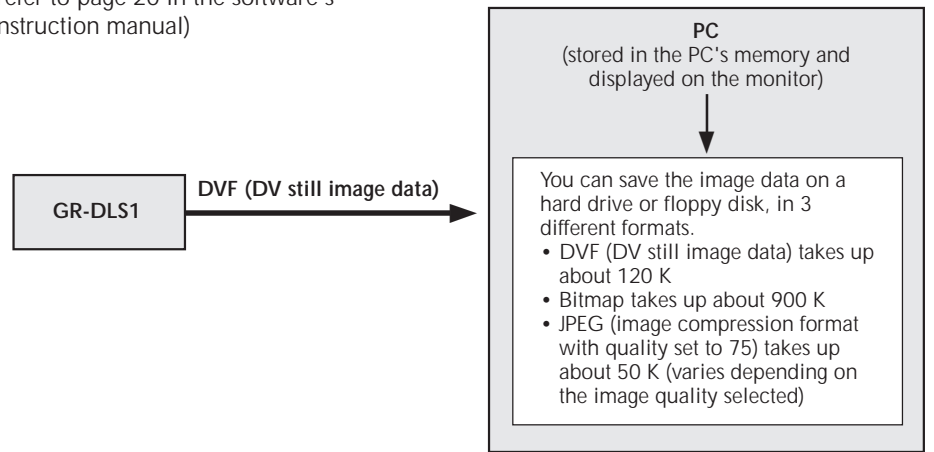
Selected scenes on a pre-recorded tape can be edited in a specified sequence.



### VIDEO CAPTURE

#### Image Data Flow (When Using JLIP Video Capture Software)

The transfer image (640 x 480) is captured from the GR-DLS1 in DVF format. When you want to change its format to Bitmap or JPEG, select "File"—"Save Image As..." before saving. (refer to page 20 in the software's instruction manual)



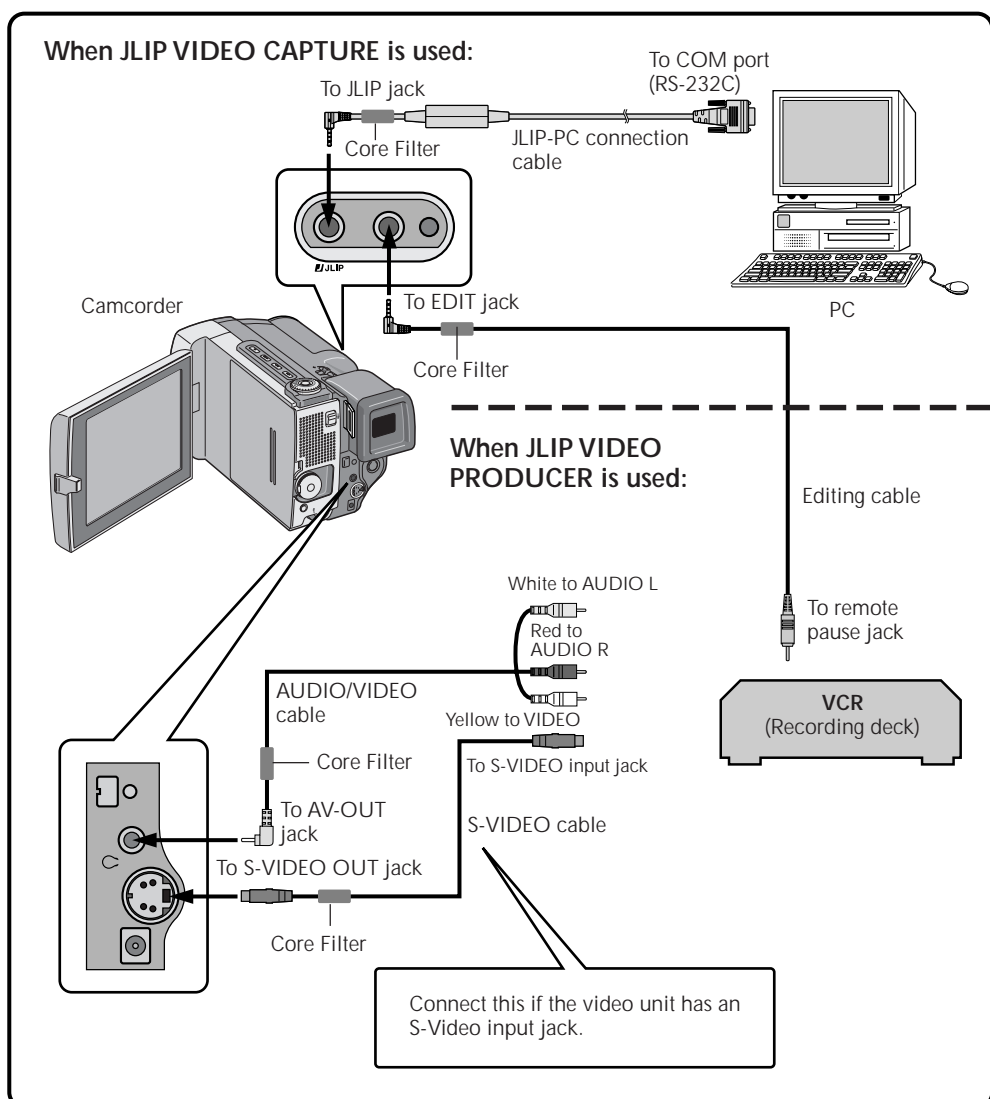
#### NOTES:

- The index image is displayed in the image display box.
- Each time the image display box is double-clicked, the full image data (640 x 480 pixels) is displayed only after full image data transfer is finished.

### CONNECTIONS

- To assure safety, make sure all units are turned off before making any connections.
- We recommend that you use the AC Power Adapter/Charger.
- When connecting the provided cables, be sure to plug the connectors equipped with core filters into the camcorder.
- Do not make any connections to the camcorder's DV OUT connector.

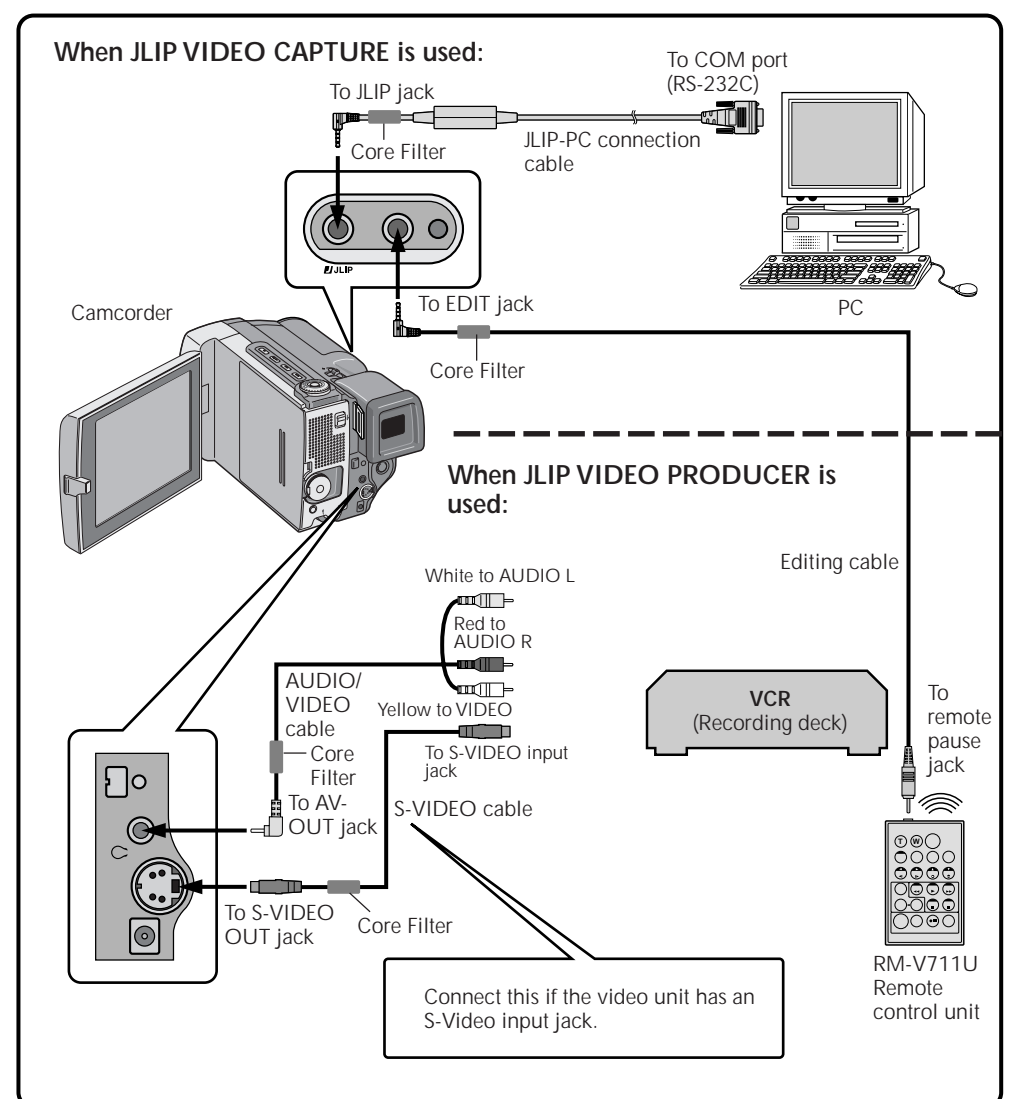
#### WHEN CONNECTED TO A VCR EQUIPPED WITH A REMOTE PAUSE JACK



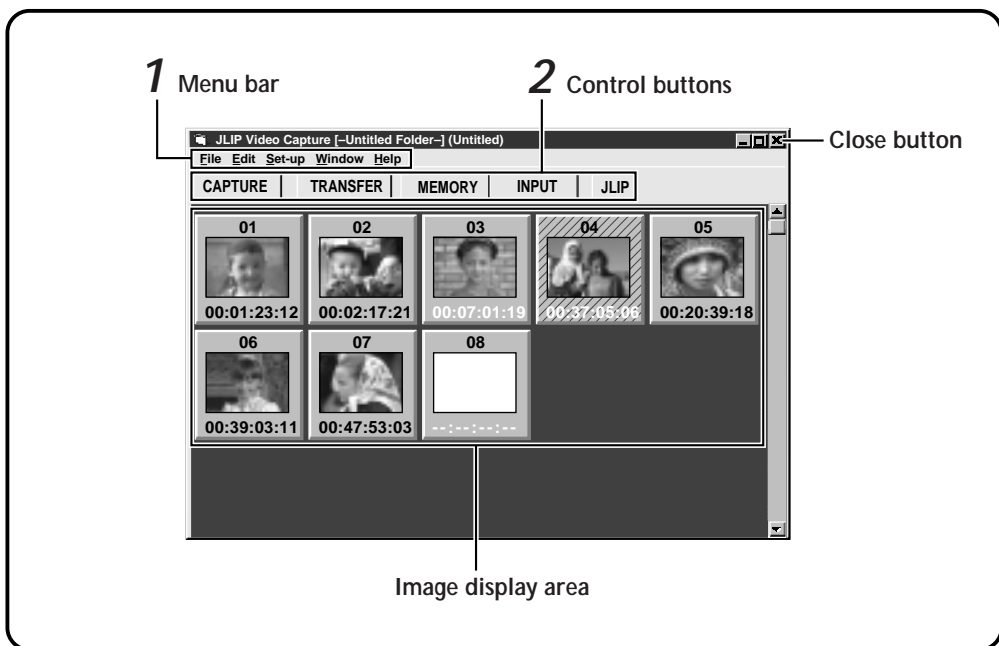
#### WHEN CONNECTED TO A VCR NOT EQUIPPED WITH A REMOTE PAUSE JACK

When using a VCR not equipped with a remote pause jack, set your VCR brand using the RM-V711U remote control unit, then perform editing using the RM-V711U.

For further operating procedures, refer to pages 63–67 in the camcorder's instruction manual.



## VIDEO CAPTURE WINDOW BUTTONS AND DISPLAYS



When connected to the GR-DLS1, there are several items that cannot be operated:

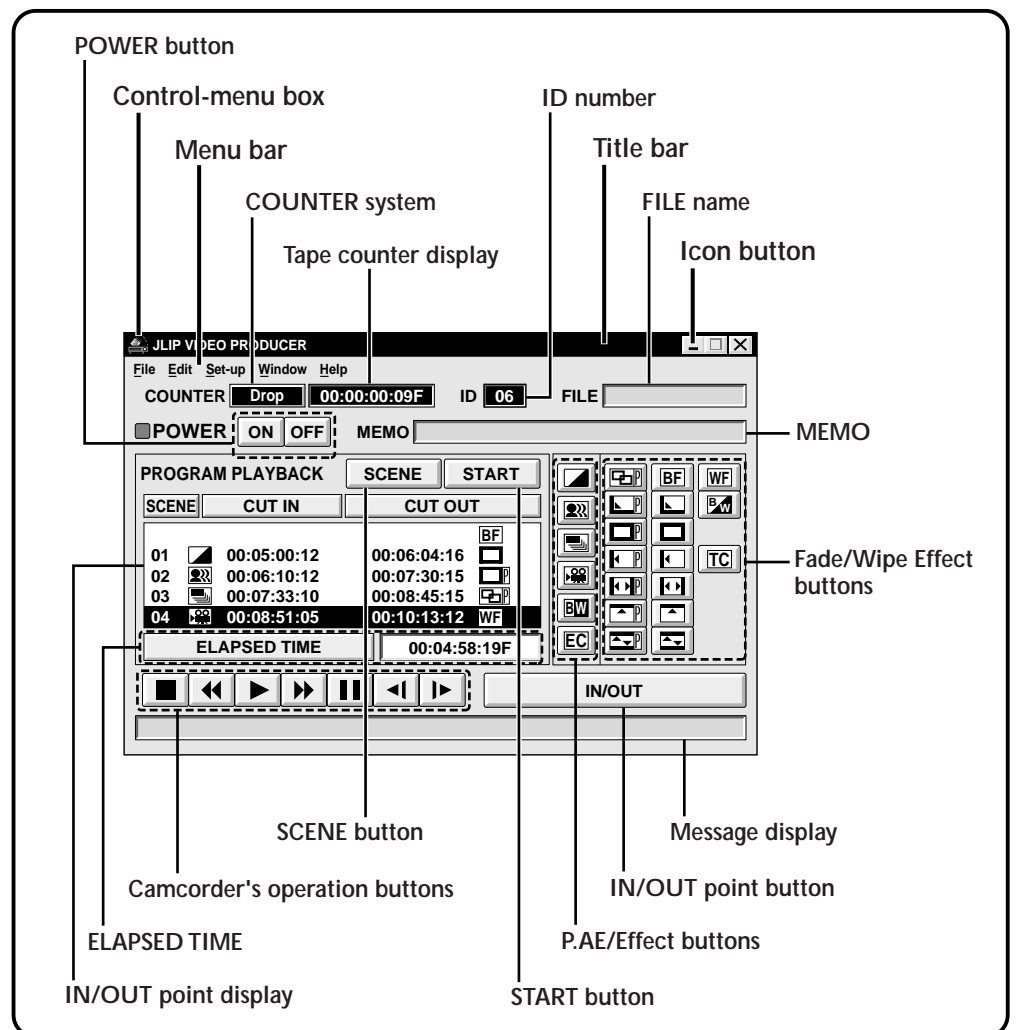
### 1 Menu bar

- "Edit"—"Transfer the Index Image"  
This command cannot be used with this system.
- "Edit"—"Transfer the Full Image"  
This command cannot be used with this system.
- "Set-up"—"Image Format"  
This command cannot be used with this system.
- "Set-up"—"Counter Reset"  
Since the GR-DLS1 records its counter data on the tape as a time code, counter reset is not possible.

### 2 Control buttons

- MEMORY/INPUT buttons  
These buttons do not function.

## VIDEO PRODUCER WINDOW BUTTONS AND DISPLAYS



When connected to the GR-DLS1, there are several items that cannot be operated:

- "Set-up"—"Device Change"  
Since it is impossible to connect to 2 or more GR-DLS1's, there is no need to change the connected unit.
- "Set-up"—"Counter Reset"  
Since the GR-DLS1 records its counter data on the tape as a time code, counter reset is not possible.
- "Set-up"—"Function Set"—"Auto Capture"  
Since it is impossible to also connect to the JLIP connector on the GV-PT1/GV-PT2 video printer, you cannot control the video printer.
- "Window"—"Video Printer"  
Since it is impossible to also connect to the JLIP connector on the GV-PT1/GV-PT2 video printer, you cannot control the video printer.

## TROUBLESHOOTING

When using JLIP Video Capture Software:

Problem	Cause
No effect when clicking the Input Select/Memory buttons.	● These buttons do not function.
"SEND" appears on the GR-DLS1's monitor.	● This is displayed during image transfer from the GR-DLS1 to a PC. The GR-DLS1's monitor displays a blue background and the playback image cannot be viewed.
The captured image differs from the image on the GR-DLS1.	● If the captured image has special effects (such as digital zooming during playback or Sepia mode), the image is captured without the effects.
When capturing an image shot by the GR-DLS1 in wide mode.	● Its index image is displayed with an aspect ratio of 4:3. However, the full image is displayed and is saved with an aspect ratio of 16:9. ● It is displayed with an aspect ratio of 4:3 in the 16 Segment Image window. But when the image is saved or printed, it has an aspect ratio of 16:9. When printed on a regular 16-division sticker sheet, the printed image is shifted towards the upper end of the sticker sheet.
JLIP Video Capture Software does not work.	● Click "Set-up"—"Device Change". Select "Use the capture function of the device selected above" in the "Device Selection" window.
Step by Step Capture mode is not available.	● When connected to the GR-DLS1, you cannot capture an image in any mode other than normal playback or still image playback mode. Also, when capturing an image recorded with special effects added, only the original image is captured; images and effects cannot be captured together. (refer to page 16 in the software's instruction manual)

When using JLIP Video Producer Software:

Problem	Cause
MOSAIC FADER button is not displayed in the JLIP VIDEO PRODUCER window.	● When connected to the GR-DLS1, MOSAIC FADER effect is not available.
When setting up a programmed scene, the image is played back with the same P.AE/Effect as used in the previously programmed scene.	● P.AE/Effect buttons can be used to spice up programmed scenes. If you set an effect in a programmed scene, the effect is also applied to the camcorder's playback image until this particular scene is previewed. Therefore, after selecting an effect, always click on "SCENE" to preview the effect. (refer to pages 49 and 54 in the software's instruction manual)

## LIST OF ERROR MESSAGES

When using JLIP Video Capture Software:

Message	● Appears when: ■ Action:
Check the capture device.	<ul style="list-style-type: none"> <li>● Image capture is unavailable when the GR-DLS1 is in any mode other than playback.</li> <li>■ Set the GR-DLS1 to the playback mode, and try capture again.</li> <li>● Image capture is unavailable when the ID number of the GR-DLS1 has not been confirmed.</li> <li>■ Execute JLIP initialization to confirm the ID number.</li> <li>● If operation stops after this message appears, do the following:               <ol style="list-style-type: none"> <li>1. Turn off the power to the connected units and turn it on again.</li> <li>2. Close this software program and start it up again.</li> <li>3. Initialize JLIP.</li> </ol>               Images stored in memory will be lost. (refer to page 10 in the software's instruction manual)             </li> </ul>